



# CorePro LED PLL



## CorePro LED PLL EM/Mains 12W 830 4P

CorePro, LED, PL-L, EM, 312 mm, 12 W, 24W PL-L, 3000 K, 1440 lm, CRI 80, 30000 hour(s)

Philips CorePro LED PLL is the ideal uplamping solution for downlights & luminaires in a wide range of general lighting applications. It integrates a LED light source into a traditional fluorescent form factor to offer superb energy savings over a lifetime that's twice as long as fluorescent alternatives.

### Product data

General Information	
Cap-Base	2G11
Nominal lifetime	30,000 hour(s)
Switching Cycle	200,000
Lighting Technology	LED
Flux measurement reference	Sphere
Warranty period	3 years
Light Technical	
Color Code	830 [CCT of 3000K]
Beam Angle (Nom)	160 degree(s)
Luminous Flux	1,440 lm
Color Designation	White (WH)
Correlated Color Temperature (Nom)	3000 K
Luminous Efficacy (rated) (Nom)	120 lm/W
Color Consistency	<6
Color rendering index (CRI)	80
LLMF At End Of Nominal Lifetime (Nom)	70 %

Photobiological safety according to EN 62471	RG0
Operating and Electrical	
Line Frequency	50 to 60 Hz
Input Frequency	50 to 60 Hz
Power Consumption	12 W
Lamp Current (Nom)	60 mA
Starting Time (Nom)	0.5 s
Warm-up time to 60% light	0.5 s
Power Factor (Fraction)	0.9
Voltage (Nom)	220-240 V
LED alternative to fluorescent lamp power	24W PL-L
Inrush current at mains	8
Max. lamp no. on MCB B type 10A - Mains	90
Max. lamp no. on MCB B type 10A – EM ballast without Compensation Capacitor.	105
Max. lamp no. on MCB B type 10A – EM ballast with Compensation Capacitor.	15
Max. lamp no. on MCB B type 16A - Mains	150

# CorePro LED PLL

Max. lamp no. on MCB B type 16A – EM ballast without Compensation Capacitor.	170
Max. lamp no. on MCB B type 16A – EM ballast with Compensation Capacitor.	25
Ballast Compatibility	EM

## Temperature

T-Case Maximum (Nom)	70 °C
----------------------	-------

## Controls and Dimming

Dimmable	No
----------	----

## Mechanical and Housing

Bulb Finish	Frosted
Bulb Material	Glass
Product Length	312 mm
Bulb Shape	PL-L
Net Weight (Piece)	0.113 kg

## Approval and Application

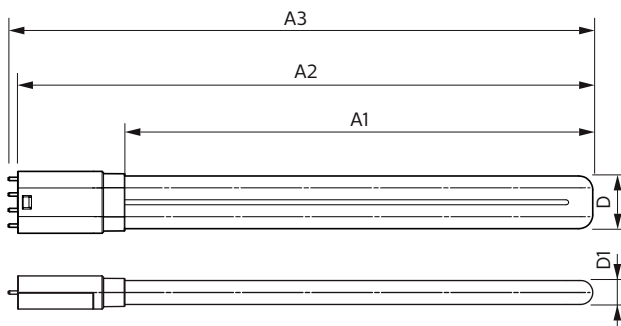
Energy Efficiency Class	E
Energy Saving Product	Yes
Approval Marks	RoHS compliance KEMA Keur certificate

Energy Consumption kWh/1000 h	12 kWh
EPREL Registration Number	1370825
CE mark	Yes
EU RoHS compliant	Yes
Flickering value (PstLM) - Flickering value as per EN 61000-3-3	1
Stroboscopic effect visibility measure (SVM)	0.4
Ambient temperature range	-20 °C to 45 °C

## Product Data

Order product name	CorePro LED PLL EM/Mains 12W 830 4P
Full product name	CorePro LED PLL EM/Mains 12W 830 4P
Full product code	872016915703300
Order code	929003592402
Material Nr. (12NC)	929003592402
Numerator - Quantity Per Pack	1
EAN/UPC - Product/Case	8720169157033
Numerator - Packs per outer box	10
EAN/UPC - Case	8720169157040

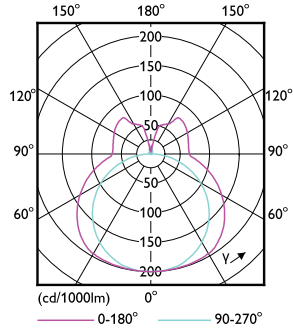
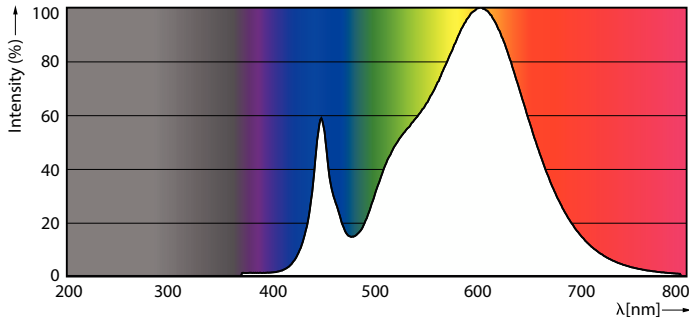
## Dimensional drawing



Product	D1	D2	A1	A2	A3
CorePro LED PLL EM/Mains 12W 830 4P	17 mm	38 mm	250 mm	312 mm	319 mm

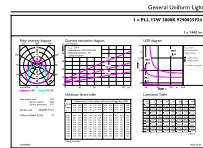
# CorePro LED PLL

## Photometric data



Spectral Power Distribution Colour - CorePro LED PLL EM/Mains 12W 830 4P

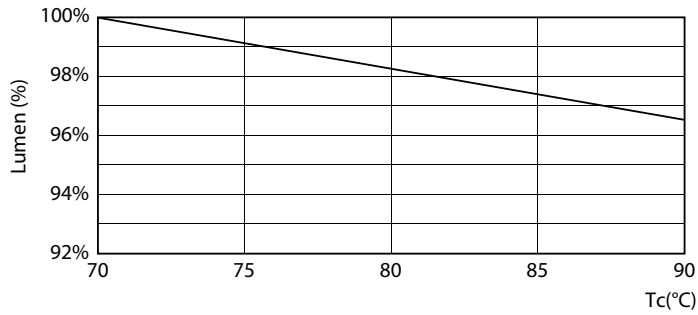
Light Distribution Diagram - CorePro LED PLL EM/Mains 12W 830 4P



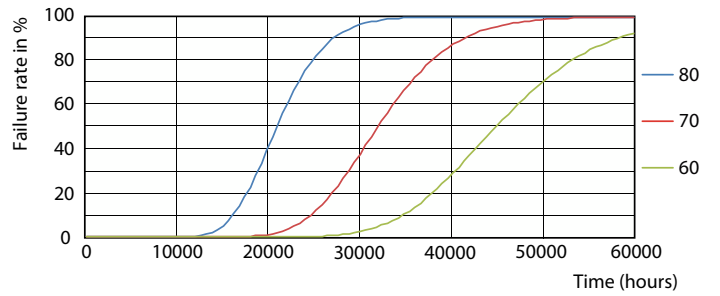
© 2024 Philips Lighting B.V. Page 10

General uniform lighting - CorePro LED PLL EM/Mains 12W 830 4P

## Lifetime



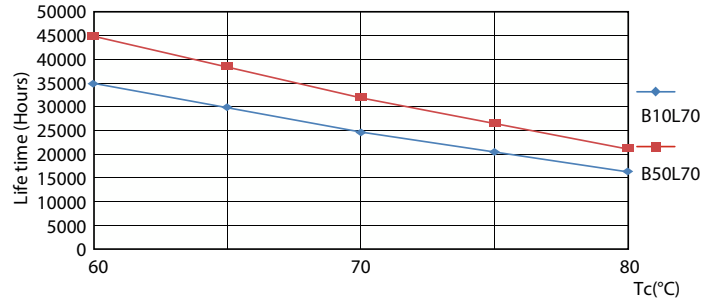
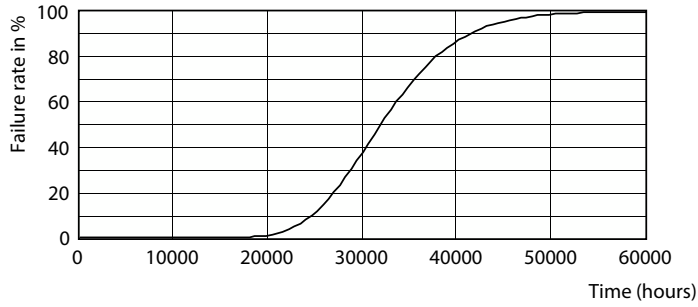
Lumen Maintenance Diagram - CorePro LED PLL EM/Mains 12W 830 4P



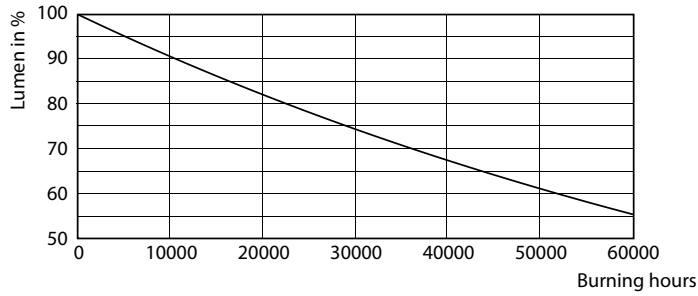
FailureRate

# CorePro LED PLL

## Lifetime



Life Expectancy Diagram



LifetimeVsTc

Lumen Maintenance Diagram - CorePro LED PLL EM/Mains 12W 830 4P

